

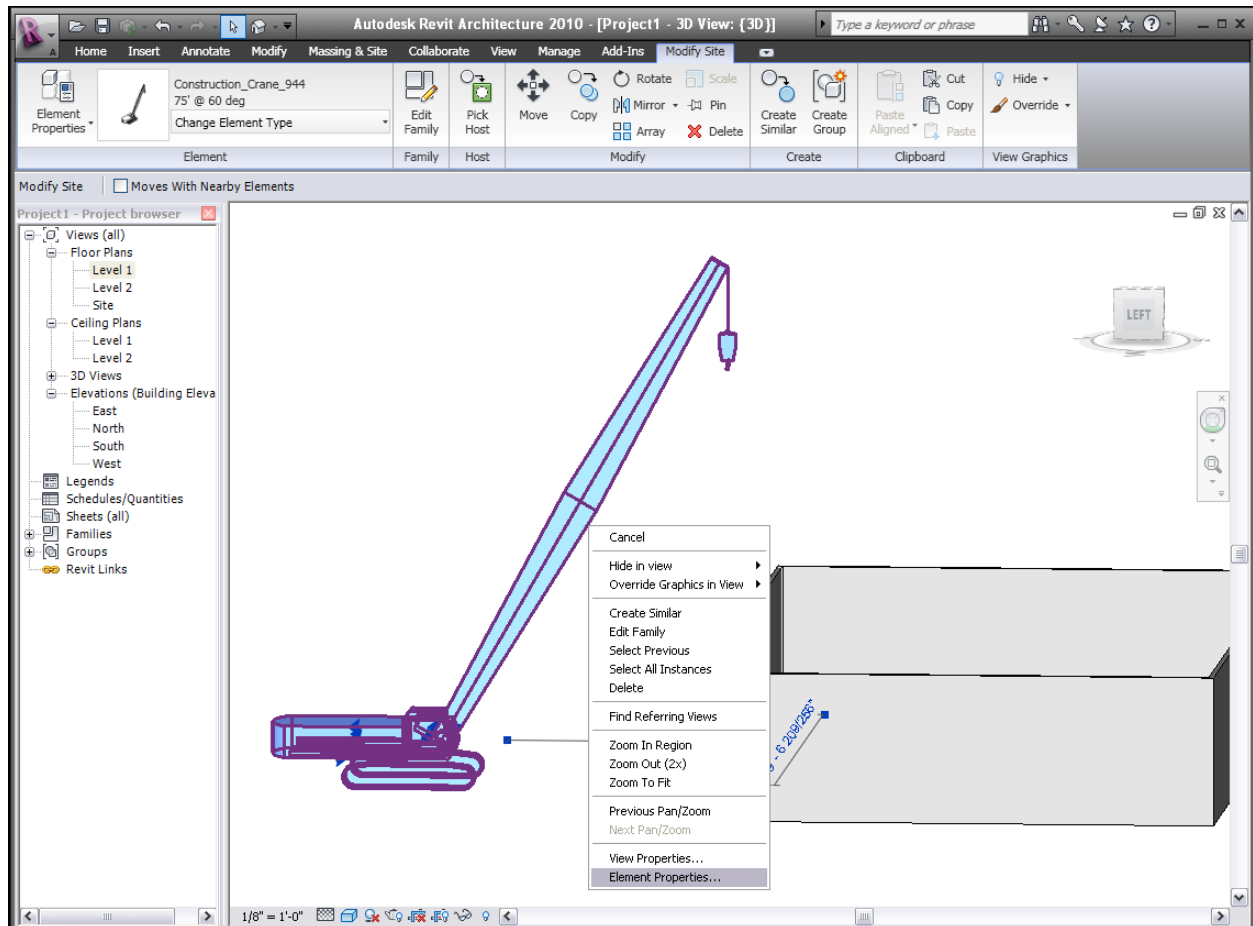
## Editing Crane Properties

### Abstract

This document will show the step-by-step process for editing a crawler crane for site logistics studies.

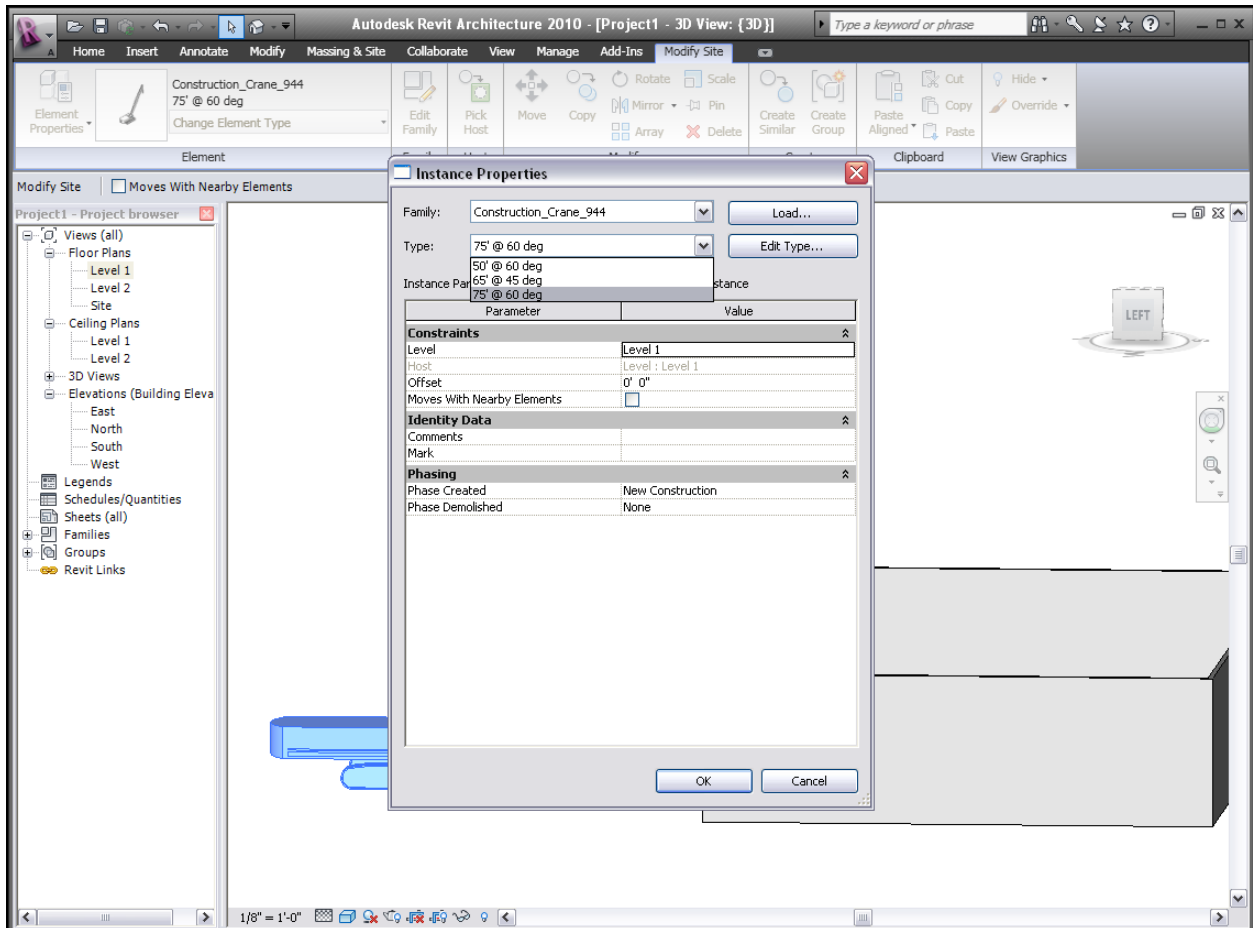
### Step 1.

Right click on crane and select Element Properties. A dialogue box will appear with the title Instance Properties.



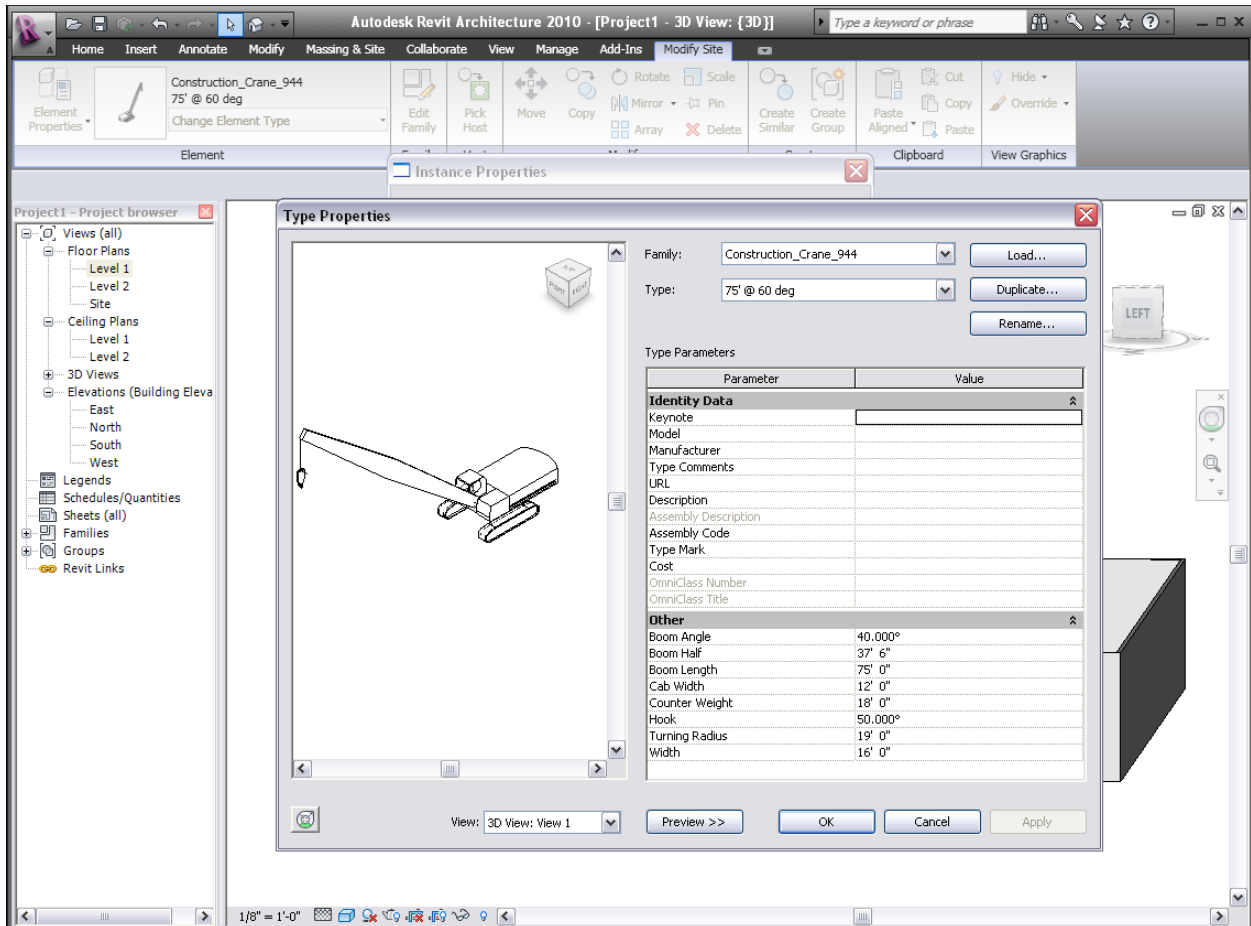
## Step 2.

Under Instance Properties dialogue box choose which Crane to use. This step will have many options depending on what crane was imported. In this case, a 75' crane at a 60 degree angle was used. However I will show in the following steps how to adjust the angle of the boom as well as other properties.



### Step 3.

To edit boom length, angle, width of crane and other properties click on Edit Type. The Type Properties dialogue box will appear. At bottom under other various properties can be adjusted by simply typing in what is desired. To preview while editing under Type Properties at bottom left of box click Preview.



#### Step 4.

Once parameters are set click OK on Type Properties box and Instance Properties box to return to the model space. To investigate crane interaction with Site.

